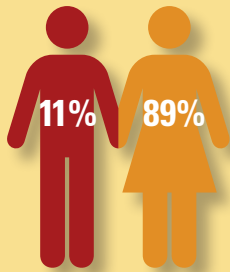


The direct-care worker at a glance (2011)

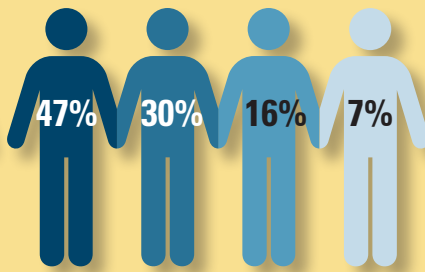
Demographic Characteristics

Employment and Income Characteristics

Gender

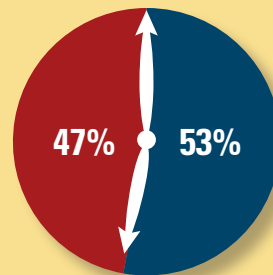


Race/Ethnicity



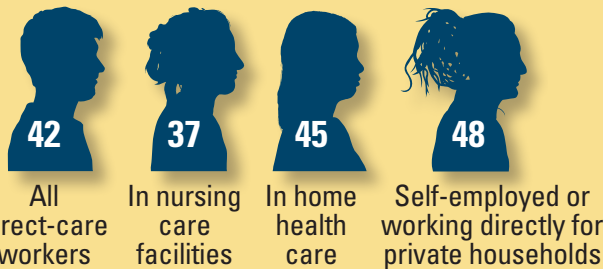
Employment Status

Employed part-time or full-time part of the year

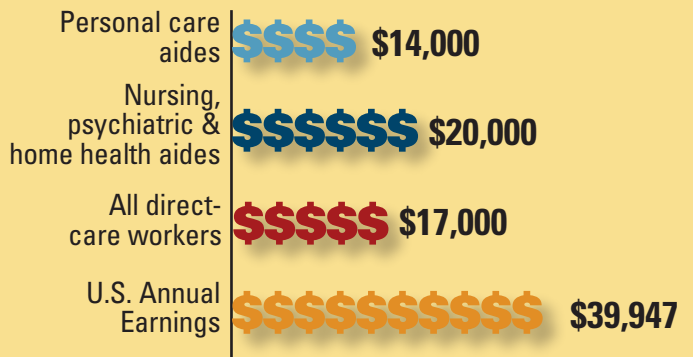


Employed full-time year-round

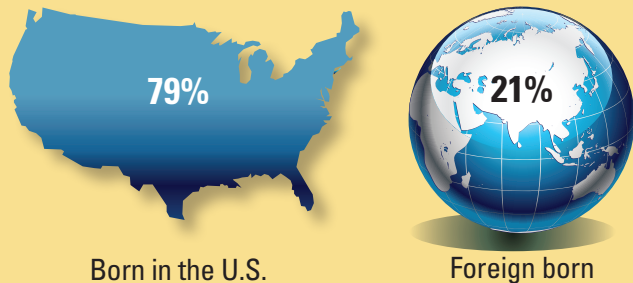
Average Age



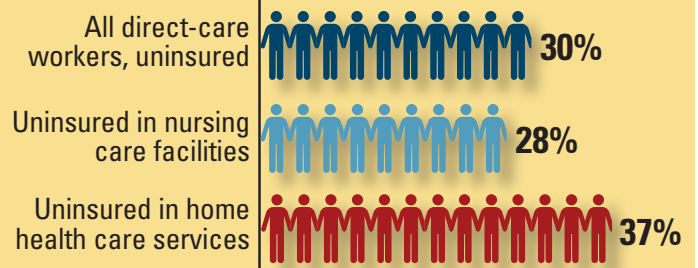
Median Annual Earnings (accounting for part-time hours)



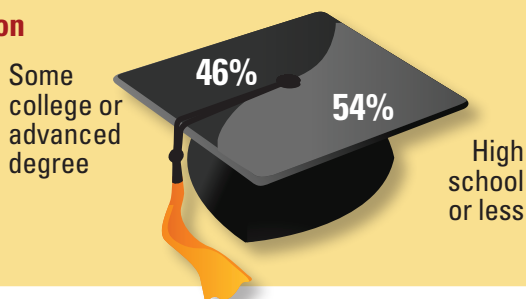
Immigration Status



Health Insurance Status



Education



Family Poverty Status & Reliance on Public Benefits



Data Sources Statistics are based on PHI analysis of the U.S. Census Bureau, Current Population Survey (CPS), 2012 Annual Social and Economic (ASEC) Supplement, with statistical programming and data analysis provided by Carlos Figueiredo.

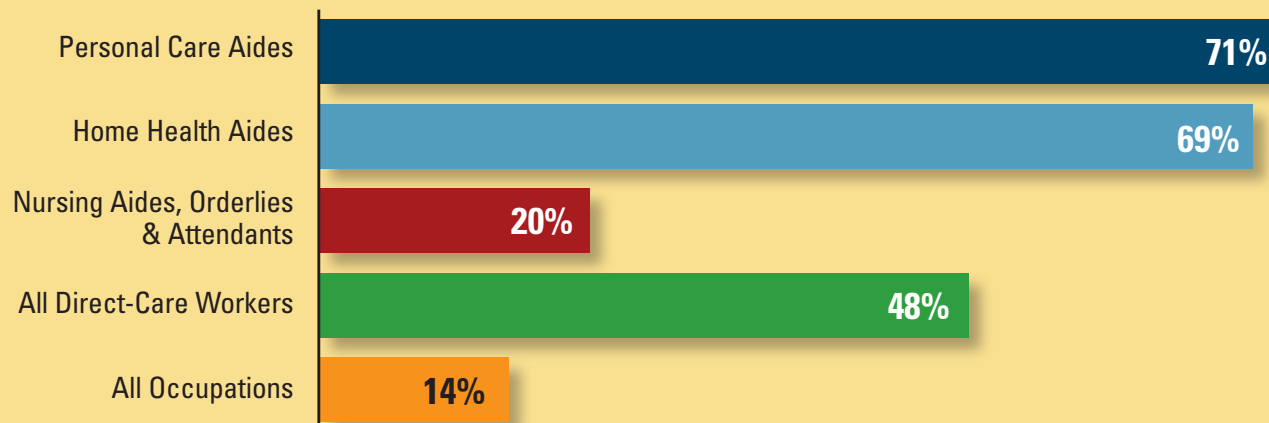
Did you know that the direct-care workforce is...?

One of the largest workforces in the nation



With demand for direct-care workers estimated at 5 million by 2020, the direct-care workforce will reach historic proportions, exceeding the demand for workers in a range of other key occupational groupings.

Composed of the nation's fastest-growing occupations



Between 2010 and 2020, personal care and home health aides are projected to be the nation's fastest-growing occupations, far surpassing the overall job growth rate of 14 percent.

Data Sources Occupational and industry employment statistics are from DOL/BLS, Employment Projections Program, 2010–20 National Employment Matrix, available at: <http://www.bls.gov/emp/emiols.htm>.

For more information on the direct-care workforce, contact Associate Director of Policy Research, Abby Marquand, at amarquand@PHInational.org.

Also visit our PHI PolicyWorks website at www.PHInational.org/policy. PHI charts and graphs are available for download. Learn more: www.PHInational.org/policy/chart-gallery.