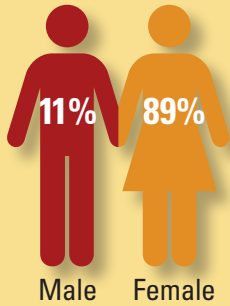


The direct-care worker at a glance (2009)

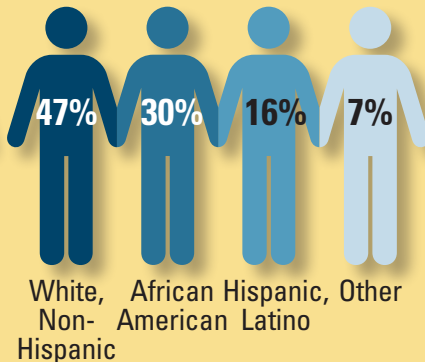
Demographic Characteristics

Employment and Income Characteristics

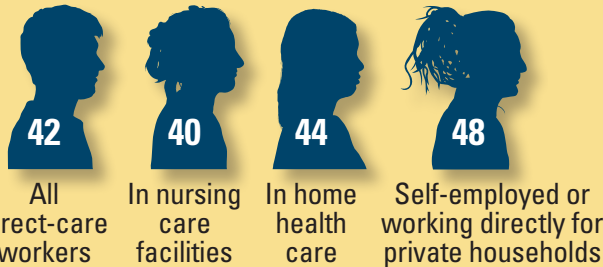
Gender



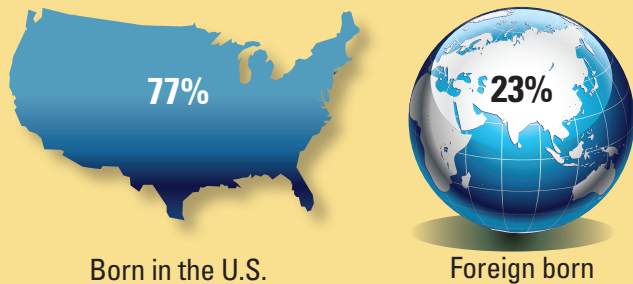
Race/Ethnicity



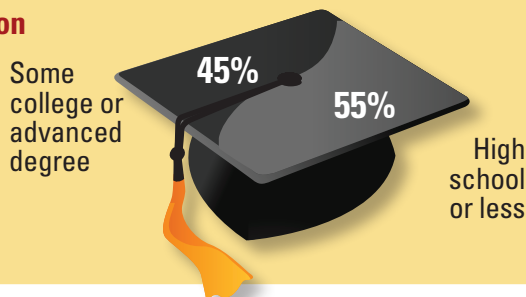
Average Age



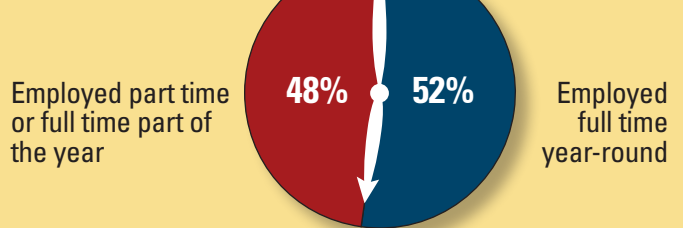
Immigration Status



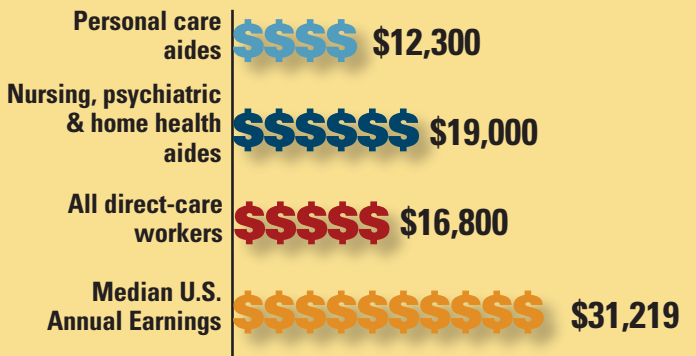
Education



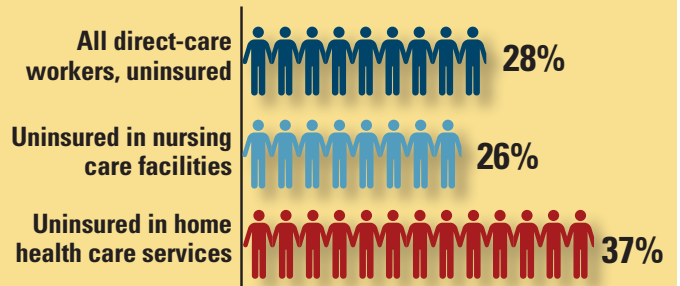
Employment Status



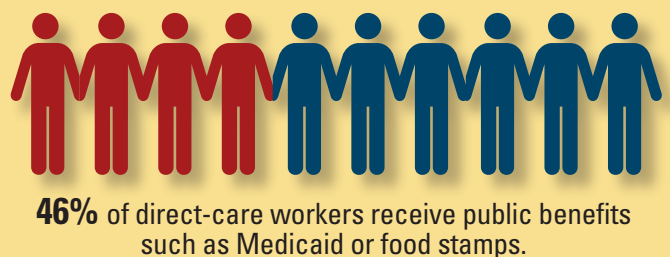
Median Annual Earnings (accounting for part-time hours)



Health Insurance Status



Family Poverty Status & Reliance on Public Benefits



Data Sources Statistics are based on PHI analysis of the U.S. Census Bureau, Current Population Survey (CPS), 2010 Annual Social and Economic (ASEC) Supplement, with statistical programming and data analysis provided by Carlos Figueiredo.

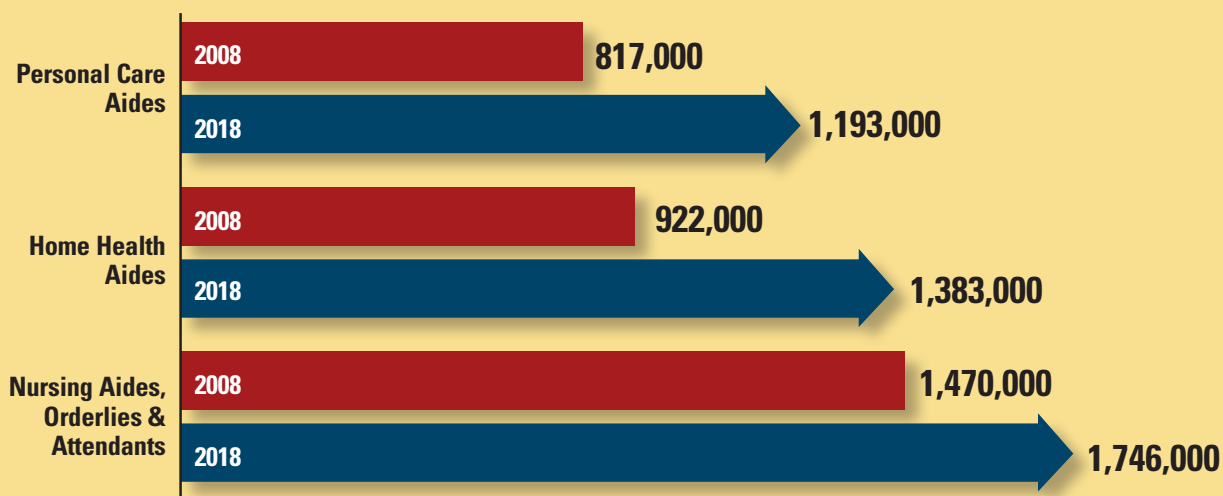
Did you know that the direct-care workforce is...?

One of the Largest Workforces in the Nation



At 4.3 million in 2018, the direct-care workforce will reach historic proportions, exceeding the demand for workers in a range of other key occupational groupings.

Generating the Most New Jobs in the Nation



All three direct-care occupations are on the list of top ten occupations projected to produce the most new jobs across the entire economy.

Data Sources Occupational and industry employment statistics are from DOL/BLS, Employment Projections Program, 2008–18 National Employment Matrix, available at: <http://www.bls.gov/emp/empjols.htm>.

For more information on the direct-care workforce, contact Director of Policy Research Dr. Dorie Seavey, at dseavey@PHInational.org.

Also visit our PHI PolicyWorks website at www.PHInational.org/policy. PHI charts and graphs are available for download. Learn more: www.PHInational.org/policy/chart-gallery.